



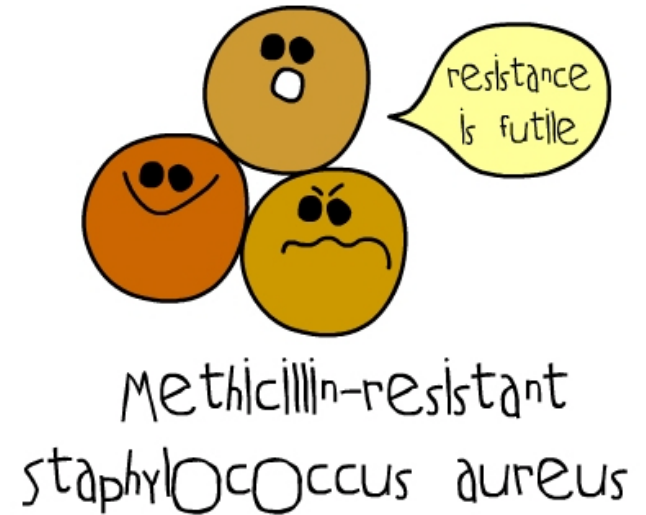
## **Fighting Antimicrobial Resistance: Being Sensitive to Changes**

Cara Bastulli

Clinical Marketing Manager, Capital and AST

# Resistance: Where Are We Now?

- The ESKAPE Artists
  - VRE, MRSA, CRE, Acinetobacter, Pseudo
- The Global Threat
  - *M. tuberculosis*
- The Food-Borne Bugs
  - *E. coli*, *Salmonella*



# Resistance: Where Are We Now?

- Resistance is dynamic, it's continually changing and new strains are emerging



- Resistance is on the move, from hospitals and nursing homes into the community
  - Workplace
  - Gym
  - Day-care facilities

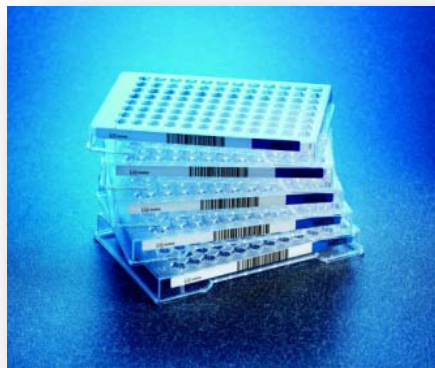


# Resistance: How Can we Help?

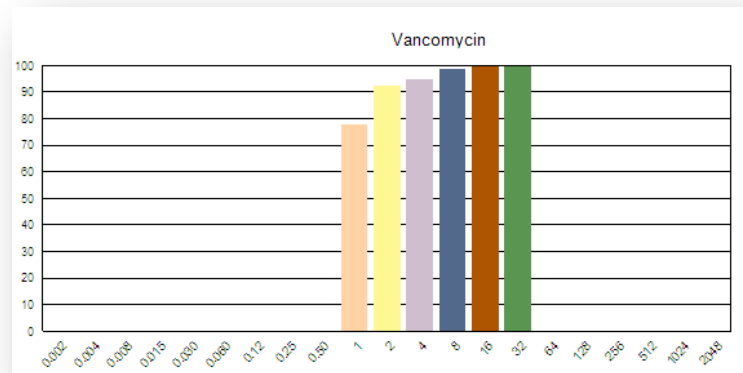
- Screen



- Test



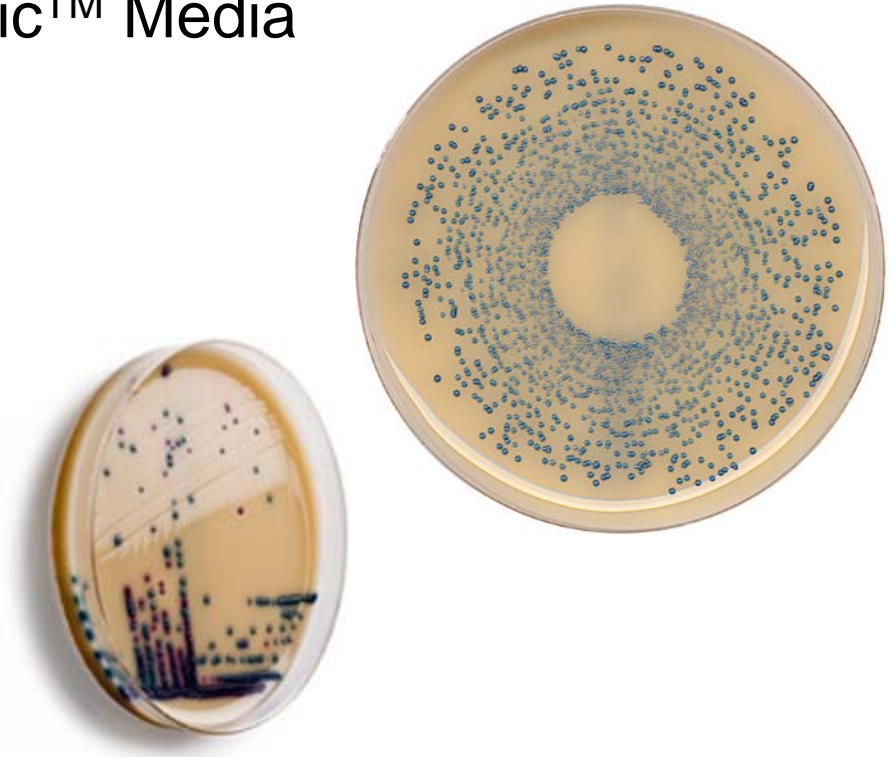
- Track



# Resistance: Screening

## Thermo Scientific™ Chromogenic™ Media

- Isolate and detect in just one step – no confirmation needed, for maximum efficiency and workflow simplicity
- Innovative chromogens ensure vivid colony counts, for rapid differentiation and easy identification
- Aids in the prevention and surveillance of MRSA & VRE transmission and outbreaks



# Resistance: Testing

## Thermo Scientific™ Sensititre™ AST System

- 96-well microtitre plates with **extended dilution ranges** and **true MIC results**
  - Preferred microbroth dilution test method
  - Superior reproducibility for accurate results the first time, eliminating offline tests and retests
    - Minimize cost
    - Greater time to result
    - Guide therapeutic choices
  - Customizable, flexible testing options
    - Easily design plates to meet your formulary
    - Create the ultimate test program tailored to your laboratory's unique needs



# Resistance: Testing

- Gram Negative
- Gram Positive
- *Streptococcus* and *Haemophilus*
- Myco – slow and rapid growing, *M. tuberculosis*
- Yeast



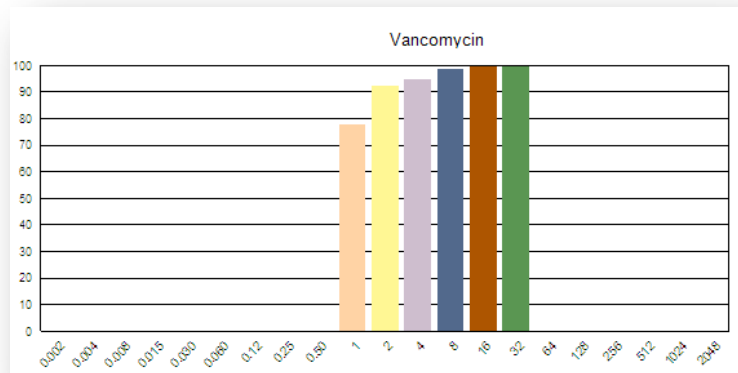
- ESBL confirmatory test
- Extended cephalosporin and carbapenem ranges
- Dtest & Cefoxitin Screen
- Doripenem, Imipenem, Meropenem, Ertapenem, Colistin\*, Polymixin B\*, Doxycycline, Minocycline, Tigecycline, Daptomycin, **Telavancin, Ceftaroline**

\*For Research Use Only

# Resistance: Tracking

## Thermo Scientific™ Sensitre™ SWIN Epidemiology Module

- Easily utilize data to generate complete, real-time reports and bar graphs in just minutes
- Monitor resistance over time to more effectively manage ever changing patient populations



Wednesday, June 06, 2007  
Selection Name: S. pneumo - Pen, Ery, Levo  
Antimicrobial: Erythromycin, Levofloxacin, Penicillin  
Organism: Streptococcus pneumoniae  
Date Range: 6/5/2005 To 6/5/2005

Cumulative MIC Page 1 of 3

Antimicrobial	#Tested	0.002	0.004	0.008	0.015	0.03	0.06	0.12	0.25	0.5	1	2	4	8	16	32	64	128	256	512	1024	2048	NOMIC
Erythromycin	287							57	58	60	68	98*											2
Levofloxacin	287							24	94	97	98												2
Penicillin	287				44	47	50	54	55	57	69	89	95	98*									2